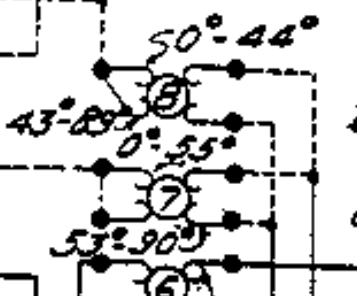


1931

20hm Snub Resistor

0.25 Ohm motor slot winding

460 Ohm holding slot winding



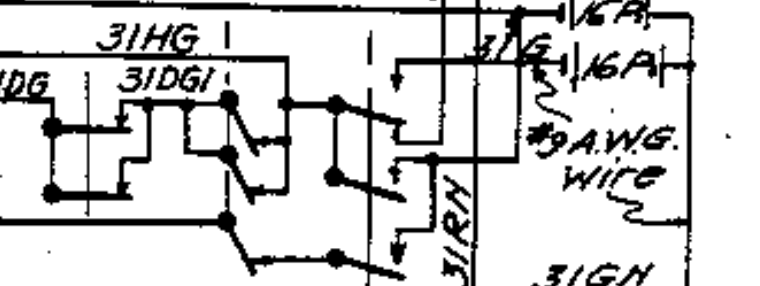
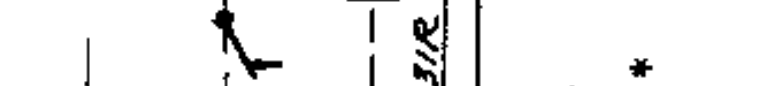
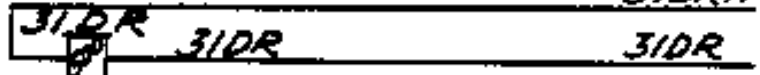
The 43°-89° contact #8 should open at 89° just before contact #1 opens

Extra Circuit Controllers	
Contact	Cam
5	0°
4	Blank
3	45° P.C.
2	45° P.C.

Signal Light

HC-33 Marker Light

\* Note  
Where there is not sufficient housing for 32 cells S-505 BSCD use 16 cells type HA-505 BSCD



31GER or Track Relay

#9 A.W.G. Wire

LOCAL WIRING for 3 POS. STYLE T2 SIGNAL WITH POLARIZED CONTROL FOR MEDIUM SPEED INDICATION FOUR-WIRE CIRCUIT

Approved *[Signature]*  
Signal Engng. System, Topeka 11-11-38 SES-37E